



INFORMATION PACK

1-7/14 Clive Street, Philipstown,
Christchurch

this is smart city living at its best!

Anest
Corp



CONTENTS

- ④ Development Overview
- ⑥ Location
- ⑦ Floor Plans
- ⑧ Pricing
- ⑨ Specifications
- ⑪ Exterior Finishes Schedule
- ⑫ Tile Schedule
- ⑬ Paint Schedule
- ⑭ Window Schedule & Flooring Schedule
- ⑮ About Nest Corp



THE DEVELOPMENT

Modern 2-Bedroom Duplex and Standalone Townhouses

Low Maintenance Living Close to the City!

This stylish and contemporary 2-bedroom duplex and standalone townhouses offers the perfect blend of comfort, convenience, and easy-care living in a rapidly developing part of Christchurch. Whether you're a first-home buyer, downsizer, or investor, this property presents a smart and affordable opportunity just minutes from the city centre.

Key Features:

- Two spacious double bedrooms with built-in wardrobes
- Light-filled open-plan living, dining & kitchen area
- Modern kitchen with quality appliances and ample storage
- Sleek, tiled bathroom with quality fittings
- Private outdoor courtyard – ideal for morning coffee or evening unwind
- Heat pump for year-round comfort
- Off-street parking
- Low-maintenance section with lock-up-and-leave appeal
- Fee simple title
- Lot 7 features one bedroom with ensuite on ground floor and another bedroom on first floor.



Thoughtful Interior Design





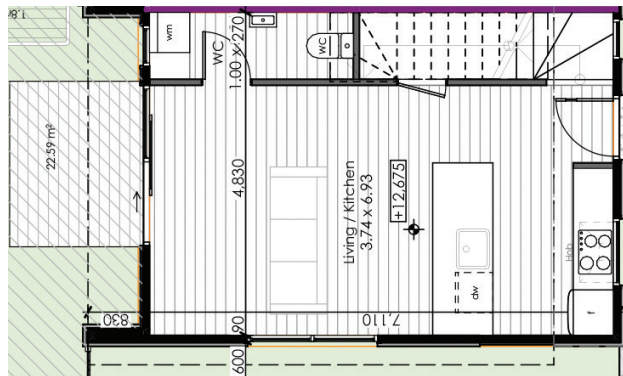
Location

1-7/14 Clive Street, Philipstown,
Christchurch

- Just 5 minutes to Christchurch CBD
- Close to local amenities, schools, and public transport
- Handy to Eastgate Mall, Linwood Village & parks
- This well-appointed duplex is perfect for those wanting a modern home in a central location, without the hassle of high maintenance or large section upkeep.

Floor Plan

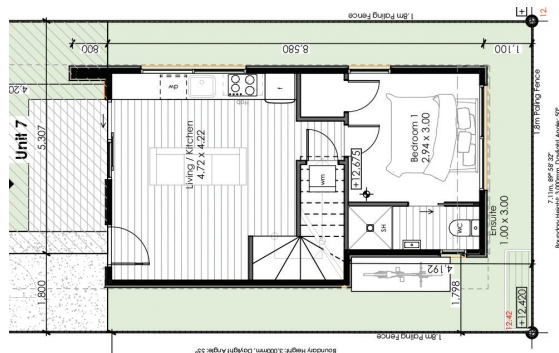
Ground Floor Unit 1-6



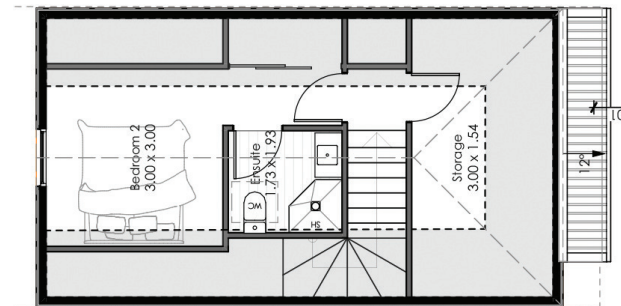
First Floor Unit 1-6



Ground Floor Unit 7



First Floor Unit 7



Pricing

LOT 1 - Floor Area: 74 sqm, 2 bedroom, 1.5 bathroom - Enquiries above \$470,000

LOT 2 - Floor Area: 73 sqm, 2 bedroom, 1.5 bathroom, 1 car park - Enquiries above \$505,000

LOT 3 - Floor Area: 76 sqm, 2 bedroom, 1.5 bathroom, 1 car park - Enquiries above \$505,000

LOT 4 - Floor Area: 79 sqm, 2 bedroom, 1.5 bathroom, 1 car park - Enquiries above \$505,000

LOT 5 - Floor Area: 79 sqm, 2 bedroom, 1.5 bathroom, 1 car park - Enquiries above \$505,000

LOT 6 - Floor Area: 76 sqm, 2 bedroom, 1.5 bathroom, 1 car park - Enquiries above \$505,000

LOT 7 - Floor Area: 87 sqm, 2 bedroom, 2 bathroom - Enquiries above \$485,000

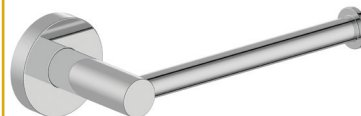
Specifications



**Voda Soul
Gooseneck Sink Mixer**



**Punch
Back to Wall Toilet Suite**



**Pin Toilet
Roll Holder – Chrome**



**Punch 400 Wall Hung
Vanity - White**



**Yale 7220
Smart Latch Lock**



**Voda Soul
Basin Mixer - Chrome**



**Standard Sized Tub,
Stainless Steel
Gooseneck Tap**



**Voda Soul
Slide Shower - Chrome**



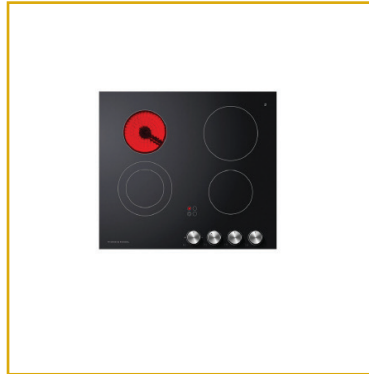
**Dux Proflo 180L
Single Element
3.0kW Cylinder**

* OR SIMILAR PRODUCT

Fisher & Packel



**60cm Series 5
Contemporary Oven,
5 Function**



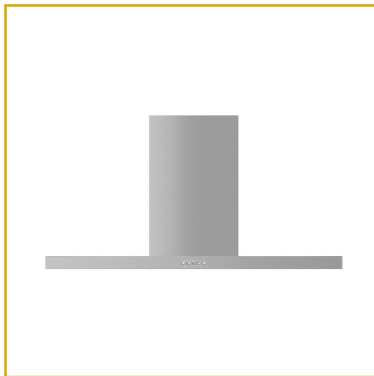
**60cm Series 5
4 Element
Electric Cooktop**



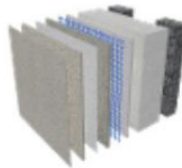
**60cm Series 5
contemporary
dishwasher**



**60cm Series 5
Integrated Insert Wall
Rangehood (Unit 1-6)**



**Haier
90cm 500 Series Box
Chimney Wall Rangehood
(Unit 7)**



**INTEGRA Lightweight Concrete Facade System
with a Mineral Finish (Unit 1-7)**


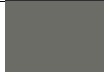

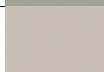
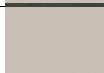
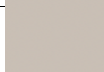
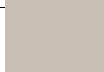

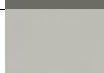
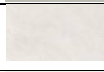
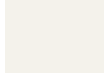
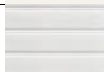
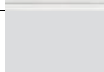


Metal Cladding and Roofing

**TARC 5-Rib Longrun Roofing
TARC 5-Rib Longrun Cladding**

* OR SIMILAR PRODUCT



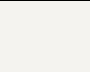




Exterior Finishes Schedule

AREA	PRODUCT	BRAND	RANGE	COLOUR	IMAGE
Roof	Long Run Steel	Colour Steel		Flaxpod	
Metal Trapezoidal Cladding	Long Run Steel	Colour Steel		Sandstone Grey	
Plaster	Integra Panel	Resene	Concrete Facade	Foggy Grey	
Window	Aluminium	APL	Dulux Powder coat	Silver Pearl	
Front Door	Aluminium	APL	Dulux Powder coat	Silver Pearl	
Slider Door	Aluminium	APL	Dulux Powder coat	Silver Pearl	
Hinge Door	Aluminium	APL	Dulux Powder coat	Silver Pearl	
Down Pipe	Steel	Colour Steel		Sandstone Grey	
Soffit	Plaster	Resene		Quarter Foggy Grey	
Kitchen Benchtop	Engineered Stone	Prime Grop	Polished	Coronet Peak	
Kitchen Cabinet fronts	Melamine	Bestwood	Velvet	White Gloss	
Kitchen Splashback	Tile	Tile Max	Mosaic FX KitKat	Bianco Satin	
Grout Between Tiles	Grout	Mapei		Manhattan 2000	


Tile Schedule

AREA	PRODUCT	BRAND	RANGE	COLOUR	IMAGE
Toilet	Floor Tiles	Tile Max	Viva Stone	White Matt	
Bathroom	Wall Tiles	Tile Max	Viva Stone	White Matt	
Bathroom Floor	Floor Tiles	Tile Max	Viva Stone	White Matt	
Bathroom Splash Back	Wall Tiles	Tile Max	Avenue	Grey Gloss	
Kitchen Splashback	Wall Tiles	Tile Max	Mosaic FX KitKat	Bianco Satin	
Toilet/Bathroom Floor	Grout	Mapei		Manhattan 2000	
Bathroom Walls	Grout	Mapei		Manhattan 2000	
Kitchen Walls	Grout	Mapei		Manhattan 2000	

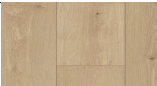
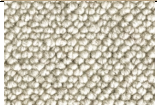
Paint Schedule

AREA	PRODUCT	BRAND	RANGE	COLOUR	IMAGE
Dining/Kitchen/ Living Walls + Skirting	Low Sheen	Resene	Spacecote Kitchen and Bathroom	Quarter Rice Cake	
Trims, Doors, Door Trims, Window Reveal	Semi-Gloss	Resene	Lustacryl	Quarter Rice Cake	
All Ceilings	Flat	Resene	Spacecote Flat for Kitchen/Bathroo m Ceiling	Double Alabaster	
Living Walls + Skirting	Low Sheen	Resene	Spacecote	Quarter Rice Cake	
Bedroom One Walls + Skirting	Low Sheen	Resene	Spacecote	Quarter Rice Cake	
Bedroom Two Walls + Skirting	Low Sheen	Resene	Spacecote	Quarter Rice Cake	
Stairwell Walls + Skirting	Low Sheen	Resene	Spacecote	Quarter Rice Cake	

Window Schedule

AREA	PRODUCT	BRAND	RANGE	COLOUR	IMAGE	NOTES
All Windows	Window Frame	APL	Dulux Powder coat	Silver Pearl		Options available

Flooring Schedule

AREA	PRODUCT	BRAND	RANGE	COLOUR	IMAGE
Kitchen/Dining/ Living	Vinyl	Urban Collection	Noble	Khaki	
Bedrooms 1 & 2, Stair	Carpet	Solution Dyed Nylon	Costal Range		

About Nest Corp

When you step into a Nest Corp property, you will immediately notice our dedication to superior specifications.

Our homes feature premium kitchen appliances, thoughtful interior layouts and distinctive external designs contribute positively to neighbourhood aesthetics while maintaining individuality.

We take pride in creating homes that serve diverse needs within our communities. Whether you are a first-time buyer taking that exciting initial step onto the property ladder, a growing family seeking more space to create memories, or an astute investor looking to build a portfolio of quality properties, Nest Corp delivers residential solutions that align with your specific requirements and aspirations.

Our journey continues to be guided by three fundamental principles: uncompromising quality in construction, genuine affordability that makes homeownership accessible, and reliable delivery timelines that respect your plans and expectations. These principles have earned us the trust of homeowners throughout Christchurch and Palmerston North, and they remain the foundation upon which we build every new development.

Get in touch with us today

Godwin Charles

Mobile: 022 656 4803 | Email: info@nestcorp.co.nz

www.nestcorp.co.nz



this is smart city living at its best!

www.nestcorp.co.nz